

Our Savior Lutheran Church—Odell Nebraska

Immeasurably More Campaign

“For I know the plans I have for you, declares the Lord, plans to prosper you and not to harm you, plans to give you hope and a future.”—Jeremiah 29:11

The logo features the letters 'O', 'S', and 'L' in a stylized font. The 'O' is red and composed of three concentric circles. The 'S' is blue. The 'L' is green. To the right of the letters is a large, black, simple cross. The background of the entire graphic is a dramatic sky with orange and yellow clouds, suggesting a sunrise or sunset, with rays of light breaking through the clouds at the bottom.

HOPE FOR OUR FUTURE

BUILDING ON OUR PAST

“Have I not commanded you? Be strong and courageous.
Do not be frightened, and do not be dismayed, for the Lord your God
is with you wherever you go”—Joshua 1:9

You are invited...to join the campaign!

- **Pray** God will guide and bless Hope for Our Future, Building on Our Past Campaign as we work to accomplish what He has called us to do. This is the most important thing you can do! If you have any questions about Prayer Events, please contact Patty Heble or Tony Penner.
- **Attend** the upcoming INFORM Forums to learn more about why we are pursuing building a new structure. This INFORM stage is the time for your questions. This is the education portion of the campaign. If you have any questions please contact Amy Vitosh. Watch newsletters from Kris Riggert to get dates for FORUMS.
- **Attend** upcoming PRAYER events & YOUTH & CHILDREN'S events. If you have any questions or would like to help with prayer events contact Patty Heble. Contact Anthony Landon or Kaylie Snyder with questions regarding children's or youth events.
- **Volunteer** your time and talents to the campaign. IF you would like to help in any way, small or large, contact Pastor or Lyle Probst.
- **Consider** how God has blessed you.
- **Pray** for God's guidance as you consider sacrificially responding to God's grace with a financial pledge. Pray for our Inspire Director and Team as they begin their journey to inspire us all!

INFORM Phase

*January 24

Campaign Kick-Off during and after 9:00 am Church Service.

*January 24– February 26

Information goes and all questions are answered.

INSPIRE Phase

*February 28

Inspire Sunday

*February 28-March 28

We are all inspired to give and make pledges.

*March 28

Commitment Celebration
(also Palm Sunday)

*March 28-April 16

Follow up and continued commitment pledging.

IMPACT Phase

*April 17

Impact Phase Begins

Church Website: oursaviorodellnebraska.com

**Click on the tab "Immeasurably More Campaign" at the top to follow this campaign. Newsletters and other info will be posted here.

Church Facebook Page:

Our Savior Lutheran Church Odell

**Most events will be streamed on Facebook Live.

Events within the sanctuary will also be on YouTube.

Pastor: 402-230-0698

Email: oursaviorodell@diodecom.net

Letter from the Campaign Director

Dear Members of Our Savior Lutheran,

We are beginning a capital campaign to pursue building a new church for our congregation. I know this sounds scary and is different from the ways we have approached things in the past, however, I feel that if we follow the plan of LCEF we will succeed in this campaign.

Allow me to tell you why I believe we need a new church and how I believe we will be able to build a church that will satisfy the needs of our growing congregation. I have been a member of this congregation my whole life and throughout that time have seen the church grow, decline, and grow again. In the past, when we have had needs we have always seemed to get the job done. For example, we have added a ramp and changed the front steps so our church is safer to enter. We have created a wonderful new entry that allows us to socialize with each other and have made many improvements in the basement. We have also built a new parsonage for our pastor and his family to live in and call their home.

With all these improvements we have made, we still have so many improvements that need to be done, and that have needed to be done for twenty years. For example, our tile walls and foundation are still in need of attention. We also still have no handicap accessible restrooms on the main floor and our roof is sagging more every year. We had a plan twenty years ago to fix these problems, but we let our fear stop us from following through with what needed to be done. While the fear of the unknown is always there we have proven as a congregation that we can accomplish anything with trust and faith in our loving God.

These last few years I have seen a tremendous growth in our congregation. While we are blessed to be growing, many other churches are not as blessed and have seen a decline in membership.

Getting to see our congregation growing and seeing our music, youth, and service activities growing has been so cool! However, our problems and needs are still here and getting bigger. I believe as our congregation continues to grow our church needs to grow with it or we will start to go backwards again.

In conclusion, I fear that if we fail to take care of our growing needs our children and grandchildren will be forced to deal with it and I believe now is the perfect time to pursue this goal. Right now many things are falling into place to make this project possible including low interest rates & our best asset - our active congregation with members that have construction knowledge and skills.

I will end with this: I had an older member of our congregation tell me, "I don't want to be the generation that didn't build this new building for our future generations." I echo this statement and pray that with God's giving hand and guidance we can accomplish this task as a congregation.

Thank you & God Bless,
Lyle Probst—Campaign Director



A Prayer for our Campaign

Dear Heavenly Father, We look for Your direction as the days and months ahead unfold. You alone know the plans You have for Your church and possibilities for Your Word to go out from it. May our desires and our intentions always reflect the love and grace You have shown Our Savior

Lutheran Church for all these many years. Prepare our hearts and minds to hear and carry out whatever the Holy Spirit is leading us to do. Always keeping in mind Your promise to hear our prayers and lead us if we seek You with our whole hearts. In Your Son's name we pray. Amen

Leadership Team

Pastor Greg Stuckwisch

Pastoral Staff

Lyle Probst

Campaign Director

Joyce Kostal

Campaign Coordinator

Patty Heble

Prayer Director

Kris Riggert

Communications Director

Amy Vitosh

Inform Director &
Commitment Celebration
Director

Tony Penner

Inspire Director

Brad Vitosh

Impact Director

Anthony Landon

Youth Emphasis Director

Kaylie Snyder

Children's Emphasis Director

Eric McMurray

Church Representative

Donnetta Hajek

Church Representative



Letter from the Pastor

To my brothers and sisters in Christ. Our Savior's grace and peace to all of us in Christ Jesus our Lord and Savior.

Seven years have gone by so quickly. As they say, time flies when your having fun. The "fun" is not over yet, the best is yet to come. When we moved here, we did not

know what to expect from this call to God's people in Odell. Prior to being asked to come, I had never even heard of Odell. When God calls a pastor to a congregation, it is hard to describe the feeling that He gives you. There is some fear and trepidation but mostly the feeling is excitement and anticipation.

When asked what made me say yes to the call, in my mind, the statement made to me was that we want this congregation to go to the next level. The other comment made was that there are a lot of volunteers. God has blessed us with both of these.

We can often talk of the glory days of old such as using another house for education, numerous kids in Sunday school and youth group, as well as active adult groups like

LWML and LLL just to name a few. At one time though it seemed as if those days were in the past. If anyone felt that way 10 or so years ago, they were wrong. Each year there are more and more children and adults that are hearing about the mighty deeds of our God. These people are not just our own kids and family but people within our community and even connecting with us over the internet. We are in exciting times and the best is yet to come.

A new church building is scary for one reason, we wonder if we can afford it. This new church building is exciting for countless reasons. Think of the worship opportunities presented, the ways to minister to the children and youth more effectively, a quieter and more suitable setting for adult bible studies. This does not even mention convenient restroom facilities which I have heard people talk about since I came. There are so many more possibilities that this new facility would provide for us that we have yet to imagine. The only thing that holds us back is fear. Why be afraid? Pray for God's direction. Trust in God's promise. Participate in sharing the gifts that God gave you in the first place. God tells us to fear not. He says to be strong and courageous. He is with us wherever we go. We can trust in Him and enjoy the ride.

Pastor Greg Stuckwisch



Letter from the Children's Education Director

“Truly, I say to you, unless you turn and become like children, you will never enter the kingdom of heaven. Whoever humbles himself like this child is the greatest in the kingdom of heaven.”—Mathew 18:3

One of the most exciting things about the possibility of a new structure for Our Savior Lutheran Church is how much it would help our educational programs. Not only would it give us more space for multiple Adult Bible Studies, it would enhance our children's education programs immensely. Yes, for so many years, what we have worked. But there was a societal shift in the 1990s, where families were no longer coming to church like they had been for so many years. Many of the youth who are coming to us at Our Savior Lutheran Church aren't coming from the same situations they once were—things are different now—not bad—just different. We can blame this or that, but that does not offer any solutions to our current day issues of space and privacy for children to learn about God. I am passionate about getting children “filled up” with God, so when they grow into young adults and adults and start to question things or feel alone, they will always have

God there with them. I want their hearts to be open to letting the Holy Spirit into it—at whatever age that may be—so that it stays with them and doesn't come and go with bad times and good times. Jesus is always there with them. We can sit back and watch

these kids from afar, waiting for the day when they do something wrong so we can judge them, or we can get our hands dirty, get to know them, and support them. The possibility of giving these kids spaces to quietly learn more about God and get excited about how He wants them live is a possibility that excites me to no end.

—Joyce Kostal

“Let the little children come to me and do not hinder them, for to such belongs the kingdom of heaven.”—Matthew 19:14



Constructing a New Building for Our Church

“Have I not commanded you? Be strong and courageous. Do not be frightened, and do not be dismayed, for the Lord your God is with you wherever you go”—Joshua 1:9

Hope for Our Future... Building on Our Past

We wonder, if in early 1926, when the Lueker, Germeroth, Hohmann, Koenig, & Duensing families in the Odell area requested a Pastor to come to Odell to perform Lutheran church services, they had any idea where Our Savior Lutheran Church would be in 2021? How much harder was it then, to communicate between churches, the District and the Synod about their needs that it is for us to communicate now?

In March 1926, a Pastor from Fairbury came over to Odell and held services for these families in the current Methodist Church building in town. This is the first time we can see that these families just needed a structure to meet in and the Methodist one was available. This points us to the fact that the building itself is not the church...the church is the people. On Ascension Day, May 13, 1926, Our Savior Lutheran Church was organized. They were still a church without a building of their own.

That fall, on Luther Day, they raised \$100 to help them purchase a building site for \$600, where they began to construct a 28 x 50 building. This building was dedicated on June 26, 1927. The total cost of the lot and the building was \$4500. Although, in 1940, \$1,835 was still owed on this cost of building the church, they were able to purchase the house north of the church to use for a parsonage. Over \$4,000 was now the church's debt. This debt was paid off in a little less than seven years.

The church building was remodeled and enlarged in 1949 with a total cost of \$14,000, of which the congregation raised \$10,000 and took a loan for \$4,000.

At a cost of \$11,300 in 1974 an extensive church remodel was completed with included refinishing the pews. This amount was pledged ahead of time. In this same year, the church was able to purchase a small house on the southeast corner of the property that would serve as a study center. This building was bulldozed in 1990 after a committee recommended that no more money be put into its maintenance. This same year discussions began regarding basement leakage.

In 1996 a Church Facilities Committee was formed that found that handicap accessibility, heating and air

upgrades, restroom accessibility, updated kitchen facility, and a shortage of space for youth and adult Bible Study were the biggest concerns.

In 2000, a building committee formed and presented a bid of \$644,000 for a new building. This project did not happen due to shortage of pledges.

Now here we are in 2021, presented with the same needs and problems from over 20 years ago: basement leakage, accessibility, Bible Studies and space.

Not only is our current structure becoming more unstable as the years pass, but, more importantly, it has reached its limit for being able to expand God's ministry and what He has asked us to do.

Do we step up to what we are being called to do or do we leave it for our grandchildren and great-grandchildren to deal with?

Costs have steadily increased over the years, and will continue to do so.

Those that volunteer many hours to the ministries of our church, see on a daily basis, the limits they have within this structure. They also see the possibilities that are out there for doing so much more.

As the years have gone by we have watched the community change. In the 1980s, Odell's families were almost 100% members of some church in town. Today, this is not the case; there are many unchurched families around us. This is an opportunity to reach out to those families.

This structure will not last forever. We can make one of the following choices:

1. Make the commitment to build now and save on costs.
2. Do nothing now and put the burden on our future generations.
3. Do nothing now and see Our Savior Lutheran Church close its doors and have to go somewhere else for service.

The Lord said to Moses, “Why do you cry to me? Tell the people of Israel to go forward.”—Exodus 14:15

Benefits of a New Facility

Worship

- More space for seating congregation members, families, guests, and visitors.
- Flexibility of extra space to add chairs for special occasions, such as Christmas Eve Service.
- Designated space at the end of some pews for wheelchairs.
- New layout of floor space and pews that allows the altar space to be wider. This will give us more space for choir to sing, children to sing, children's Christmas program, Vacation Bible School, Baptisms, etc. Viewing will be much easier for congregation with this layout.
- Ability for altar to sit away from wall, so there is access to it from behind also.
- More linear space available for communion.
- More efficient storage space for choir & music supplies, banners, paraments, candle supplies.
- Side doors to outside near altar area for easy exit, but also for special purposes, such as moving caskets in and out of church.
- Larger spaces at back to accommodate audio/visual equipment.
- Better sound system & updated equipment for broadcasting virtually.
- Narthex area will be much larger, allowing for easier fellowship before and after services. This will also give us more space for announcements, bulletin boards, handouts, mailboxes, etc. It will be a more efficient use of space.
- Will still have a coffee/kitchenette area within the Narthex.

Accessibility

- Our plans are for there to be no steps to get into the new structure. This is HUGE for our needs as a church.
- Restrooms will be on the MAIN FLOOR with no steps to access them. Restrooms will be larger inside and have handicap accessible stalls and toilets.

Pastor's Office/Secretary

- Pastor's office will be near the main entrance of the church, allowing for easier access to it by guests visiting with Pastor.
- There will be a work area adjacent to the office, so that secretarial duties can be performed more efficiently. This space can be used for small meetings with Pastor also.

Bible Study

- This is another very important need for our congregation. We will have MUCH more available space for Bible Study, including privacy of rooms for small or large groups. This would allow for multiple Bible Studies to happen at once. Option 1 plan includes a designated conference/Bible Study space just off of the narthex.

Education

- More space available for education in general.
- Separate classrooms for privacy and sound control.
- More efficient storage for classroom supplies.
- Designated Space for LYF.

Fellowship

- More space in general for fellowship.
- ACCESSIBILITY for all . Option 1 plan has the fellowship space on the same level. Option 2 plan has the fellowship space in a basement with exterior access to fellowship.
- Flexibility of space
- Larger kitchen & better equipment, allowing for special occasions such as youth fundraisers & Easter breakfasts and new events!

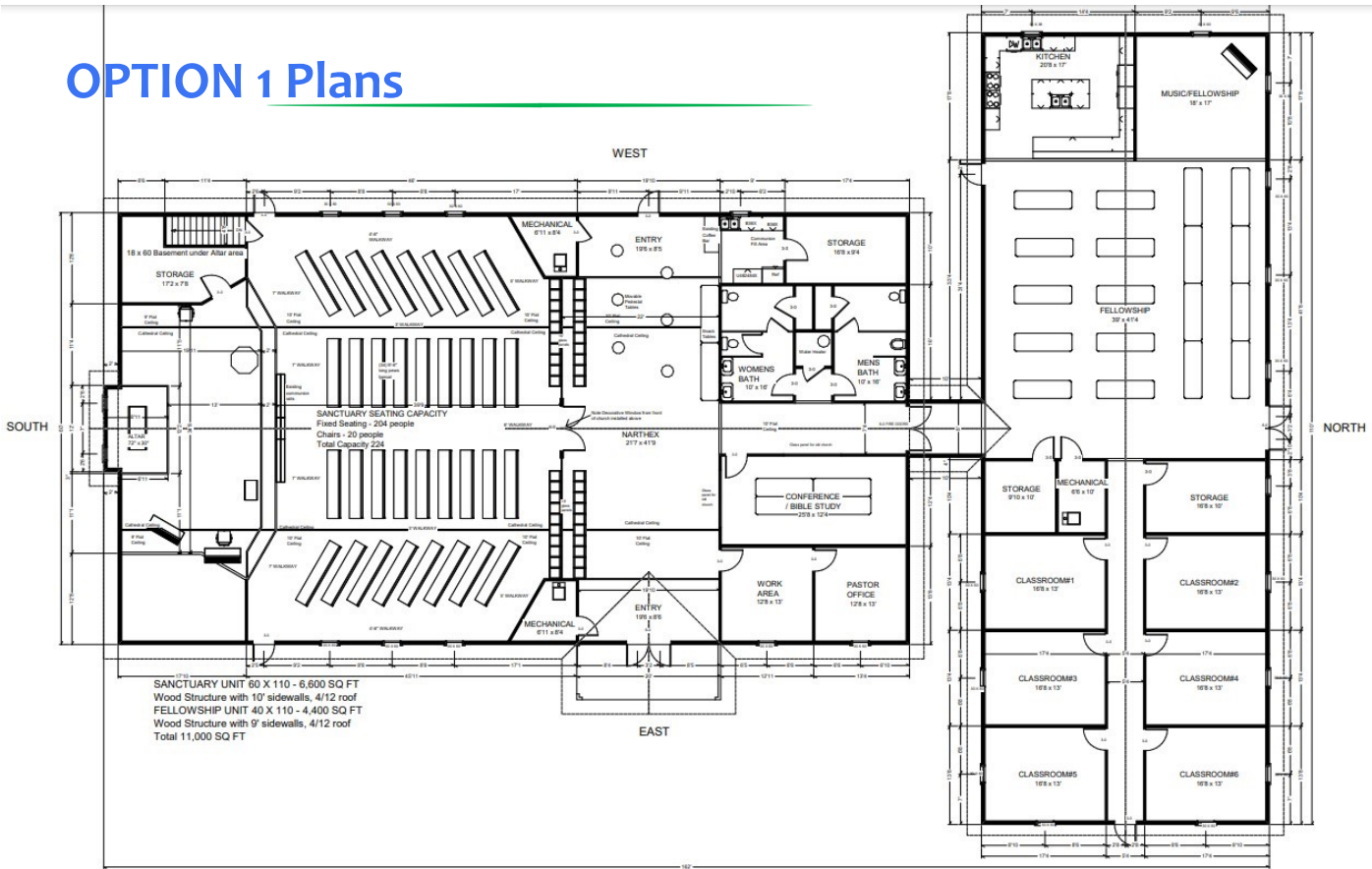
Outreach

- More flexibility and space for current outreach and new projects.
- Possible community use.

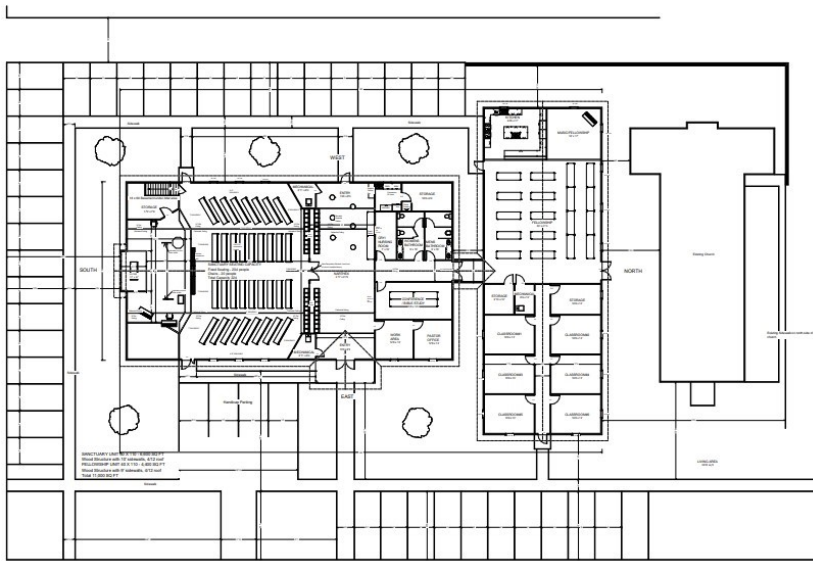
General

- More storage and efficiency of storage.
- More flexibility.

OPTION 1 Plans



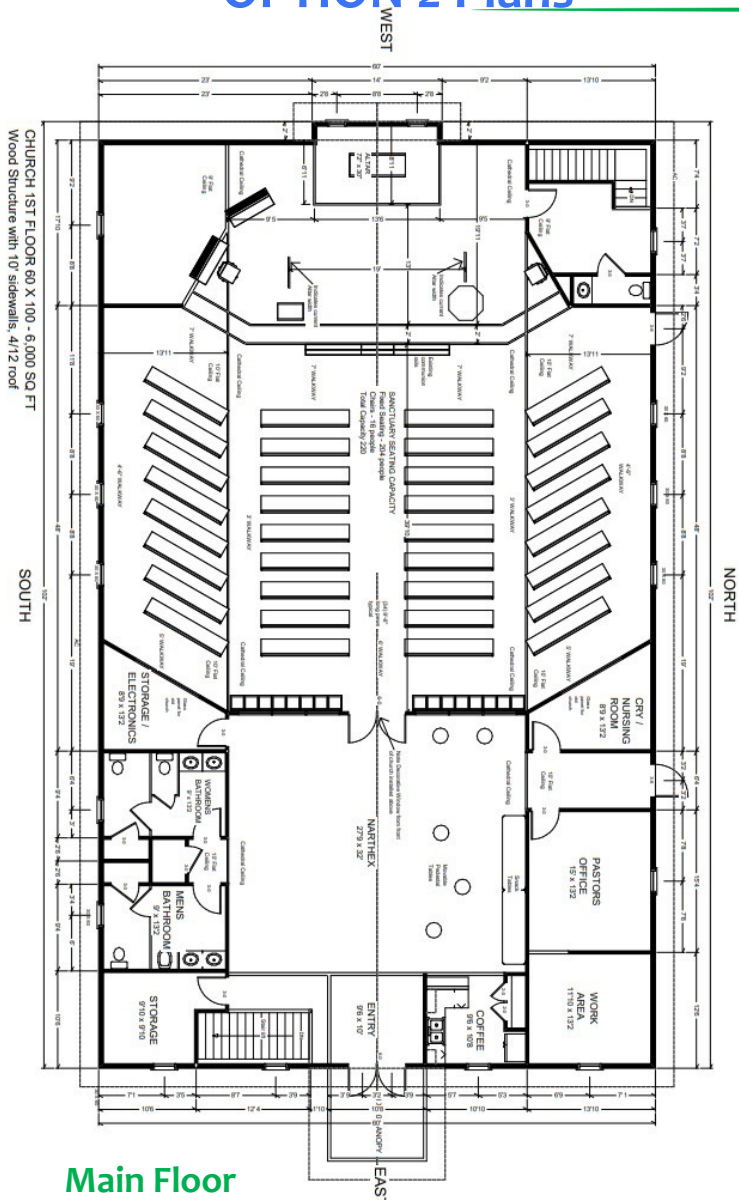
Option 1 Plans are two structures, both on ground level. The main/sanctuary structure and a fellowship/classroom structure. These structures are both accessible on ground level with no step to enter. The main building would include the sanctuary, narthex, coffee bar/kitchenette, conference/Bible study room, Pastor's office, and accessible restrooms. The second structure would include classrooms, fellowship space, music space, and kitchen. Those using the second structure would access the restrooms in the main building.



Option 1 structure would sit in our current parking lot. The main entry would face east with the altar area to the south. Parking would be around the structure (see drawing at left). There would be handicap parking just outside the main entrance.

Plot Plan Option 1

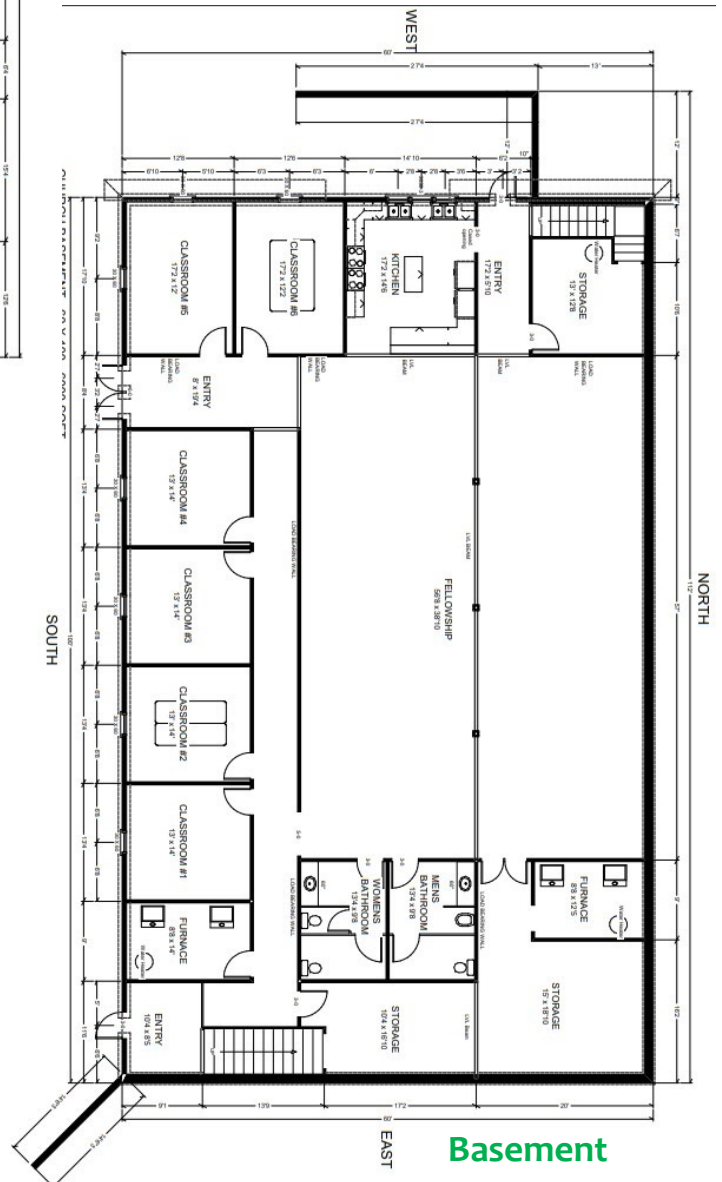
OPTION 2 Plans



Main Floor

Option 2 structure would sit just south and parallel of our current building. The main entry would face east with the altar area to the west. Parking would be a large lot to the south of the structure.

Option 2 Plans are a two-level structure, with a main floor and a basement. The main floor has ground level entry. The basement would have interior steps & exterior ramps to access it. (elevator is a possibility, if so desired). The main floor includes sanctuary, narthex, Pastor's office, coffee area/ kitchenette, and accessible restrooms. The basement would include classrooms, fellowship space, kitchen, and restrooms.



Basement



OUR SAVIOR LUTHERAN CHURCH

ODELL, NEBRASKA